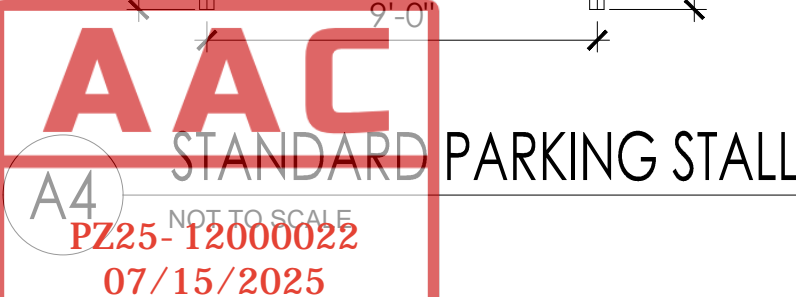


	PROJECT STATUS	
	AAC	
	DATE	
	10-03-2025	
	PROJECT NUMBER	
	49-2023	
	SCALE	
	AS SHOWN	
A	DRAWN BY	CHECKED BY
	CMR	BPH
	DRAWING TITLE	

AS-102



1. ACCESSIBLE PARKING SPACES AND ACCESSIBLE AISLES SHALL BE LEVEL WITH SURFACE SLOPES NOT EXCEEDING 2.0% IN ALL DIRECTIONS.
2. IF ACCESSIBLE AISLE CROSSES THE TOP OF THE HANDICAP SPACE, WHEEL STOP SHALL BE USED TO MAINTAIN MINIMUM 44 INCH CLEAR ACCESSIBLE ROUTE.
3. IF WHEEL STOP IS USED, PARKING SHALL HAVE 18" CLEAR SPACE.
4. ACCESSIBLE PARKING SIGN SHALL BE PLACED AS TO NOT ENCRUSH INTO THE ACCESSIBLE AISLE MINIMUM 44 INCH CLEAR ACCESSIBLE ROUTE.
5. NUMBER OF ACCESSIBLE PARKING SPACES SHALL MEET REQUIREMENT OF THE LATEST ISSUE OF THE FLORIDA ACCESSIBILITY CODE FOR BUILDING CONSTRUCTION
6. EACH ACCESSIBLE PARKING SPACE SHALL BE POSTED W/ PERMANENT SIGN BEARING THE INTERNATIONAL SYMBOL OF ACCESSIBILITY AND THE CAPTION "PARKING BY DISABLED PERSON ONLY" AND "TOW-AWAY ZONE AND \$250.00 PER VIOLATION" MIAMI DADE COUNTY ORDINANCE 30-443 (44210)

